

Simulation Scenarios of Red Palm Weevil Dispersion in Corfu, Greece

Evangelos Alvanitopoulos¹, Ioannis Karydis¹ and Markos Avlonitis¹

¹ Ionian University, Plateia Tsirigoti 7, Corfu, 49100, Greece

Abstract

This paper presents a simulation study investigating the possible dispersal of the red palm weevil, a highly destructive pest affecting various palm species, across the island of Corfu, Greece. The simulation incorporates ecological modeling and geographical data to analyze the dynamics and their spread of red palm weevil populations over time and space. Key findings indicate that factors such as tree density and spatial distribution significantly influence infestation rates, with densely populated areas being more susceptible to rapid spread. The study underscores the importance of early detection and targeted interventions to control red palm weevil populations and mitigate their impact on affected regions. This research contributes to the development of effective pest management strategies that could potentially be adapted to address similar invasive species challenges in other agricultural contexts.

Keywords

Rhynchophorus ferrugineus, date palm, simulation, spatiotemporal, dispersion, population

1. Introduction

The Red Palm Weevil (*Rhynchophorus ferrugineus*), or RPW, is a destructive insect that originates in Southeast Asia, but has spread to the Middle East, Europe, Africa and the Americas. It primarily targets palm trees, especially date palms (*Phoenix dactylifera*), coconut palms (*Cocos nucifera*) and oil palms (*Elaeis guineensis*). In particular, date palm trees are known for their rich nutritional properties and revenue in the Arab world [1]. The RPW invaded the Mediterranean basin in 2004, leading to significant damage to date palm plantations and ornamental palm trees in the region [2]. The RPW also poses a risk to significant cultural heritage sites, such as the largest palm plantation in Europe located in Elche, Valencia, Spain [3], and the palm forest on the island of Crete in the Greek archipelago [2]. The widespread practice of transporting palm trees between different regions has been a major factor contributing to the expansion of the RPW. Additionally, the insect often disperses through flight to seek new habitats, food sources, and oviposition sites, beyond human-mediated activities [4]. The extensive feeding damage caused by the larvae in the soft tissue areas of infected palm trees can be highly destructive. The damage to the meristem of the offshoots or the palm crown often leads to the death of the palm, and further allows the entry of pathogens and other harmful pest insects that may prove fatal as well.

In the initial stages, RPW infestations do not exhibit visible symptoms, as the damage takes time to become apparent. By the time the infection is evident, the infested palms are often severely compromised, frequently leading to their demise. RPW are highly capable fliers, enabling them to colonize various regions of the palm tree, from the base of the trunk to the apical bud [5]. They complete their full life cycle of six to eight months within the palm tree trunk, leading to the host's eventual death [1][3][6]. It typically requires only a few RPW individuals to establish and proliferate within the same palm, ultimately causing the tree's collapse. A significant challenge is that farmers often cannot detect the RPW presence until it has reached an advanced stage of infestation, as the pest lives concealed within the palm and its developmental stages are not readily observable. By the time the infestation has progressed to advanced stages, the likelihood of saving the affected palm tree is greatly diminished [6].

Proceedings of HAICTA 2024, October 17–20, 2024, Samos, Greece

EMAIL: alvanitopoulos@ionio.gr (A. 1); karydis@ionio.gr (A. 2); avlon@ionio.gr (A. 3)

ORCID: 0009-0009-4936-9152 (A. 1); 0000-0002-9470-2729 (A. 2); 0000-0002-8575-0358 (A. 3)



© 2024 Copyright for this paper by its authors.

Use permitted under Creative Commons License Attribution 4.0 International (CC BY 4.0).

CEUR Workshop Proceedings (CEUR-WS.org)

Therefore, it is crucial to detect and address RPW infestations either in their early stages or during the more advanced phases of palm tree colonization [1].

1.1. Motivation and Contribution

Addressing the RPW infestation is crucial for the agricultural and horticultural industries, especially where economically important palm species are prevalent. The weevil severely compromises the yield and quality of these trees, leading to substantial financial impacts. Prior research has focused narrowly on modeling the weevil's population dynamics, highlighting the need for further investigation. Understanding these dynamics is key to devising effective and sustainable pest management strategies that can enhance palm tree health and productivity by mitigating the weevil's destructive life cycle. The insights and solutions from this research may also benefit addressing similar pest challenges in other agricultural systems, as many invasive pests exhibit comparable behaviors and susceptibilities to control interventions.

The primary aim of this simulation study is to model and forecast the population dynamics and dispersal patterns of the RPW. The simulation seeks to offer a comprehensive understanding of how the weevil's population increases and disseminates across a geographical area over time. The major contribution of this paper seeks to:

- Map the potential spread of weevil populations across different landscapes, identifying areas at high risk of infestation.
- Evaluate the effectiveness of various pest management strategies in predicting both the population size and the geographic spread of the weevil.
- Offer predictive insights that can guide early detection, targeted interventions, and resource allocation to minimize the economic and ecological impact of the RPW in affected regions.

The remainder of this paper is structured as follows: Section 2 provides a review of prior research on the RPW, encompassing its impact on palm trees, population management approaches, and the critical importance of early detection. Section 3 outlines the proposed simulation methodology, with the results of this methodology presented in Section 4. The findings obtained from the simulation are then discussed in Section 5. Finally, the paper concludes in Section 6.

2. Background

Infestations caused by the RPW can cause ecological and economic damage [7][13]. In regions where palm trees are cultivated for commercial products such as dates, coconuts, and palm oil, the damage inflicted by the RPW can be substantial [8]. Successful management of the RPW depends heavily on early identification and targeted control measures [1]. However, the efficacy of these strategies is frequently constrained by the weevil's capacity for rapid, widespread dispersal, especially in regions with high palm tree densities [9].

The RPW's rapid flight capabilities and highly mobile behavior are critical factors that substantially contribute to its ability to infest new areas [10]. To enhance comprehension of the RPW's movement behaviors, researchers have performed experiments leveraging wind tunnels and flight mills. Studies have shown that the RPW can cover up to 315 km during its lifetime [11]. Avalos et al. observed that while most adult RPWs exhibit short-range flight patterns, a subset of the population has the capacity to undertake medium to long-distance flights, ranging from 100 to 5000 meters [4]. According to the mark-recapture study conducted by Abbas et al., the RPW has the ability to traverse distances of up to 7 kilometers within a 3 to 5 day period. This study utilized the shortest recorded dispersal distance of 150 meters as the basis for its simulation, in accordance with the empirical findings, as adult weevils can cover long distances in a series of short flights [4].

3. Proposed Methodology

The proposed methodology simulates the dispersal of the RPW across the island of Corfu. This approach combines geographical data, ecological modeling, and computational techniques. The initial locations of the palm trees and the starting point of the infestation were determined through consultations with municipal gardeners. The data suggests that the infestation reached the entire island within 4 years. The simulation models the weevil's life cycle, including egg production, time to adulthood, and lifespan. Their movement across the landscape is simulated using random directional vectors, adjusted by fly speed and proximity to trees. The simulation accounts for tree infection when weevils come into proximity, triggering a countdown during which the infected palm spawns a new generation of weevils. Some initial basic assumptions were made: Each palm tree can be infested by a single weevil and can sustain one generation. The tree dies after the eggs hatch and the new weevils emerge.

Figure 1 illustrates the key steps of the simulation process. The process commences with the Initialization phase, wherein the simulation environment is established by defining relevant parameters and generating initial positions for the weevils. A critical control factor in this simulation is the drift factor, which governs the attraction of the weevils toward palm trees. Extensive testing was performed with different drift factor values to ensure that the simulation closely matches real-world data. The primary loop of the simulation involves generating random movements for the weevils and determining their spatial relationship to the palm trees. If a weevil is near a palm, the simulation checks the distance between the weevil and the palm and applies a drift factor to simulate the weevil's attraction toward the tree. The weevil's position is then updated, and the simulation checks if any palm trees have become infected. If a tree is infected, new weevils emerge around it, and the simulation continues to monitor the lifespan of each weevil. This iterative process persists until the simulation reaches its conclusion, at which point the results are produced.

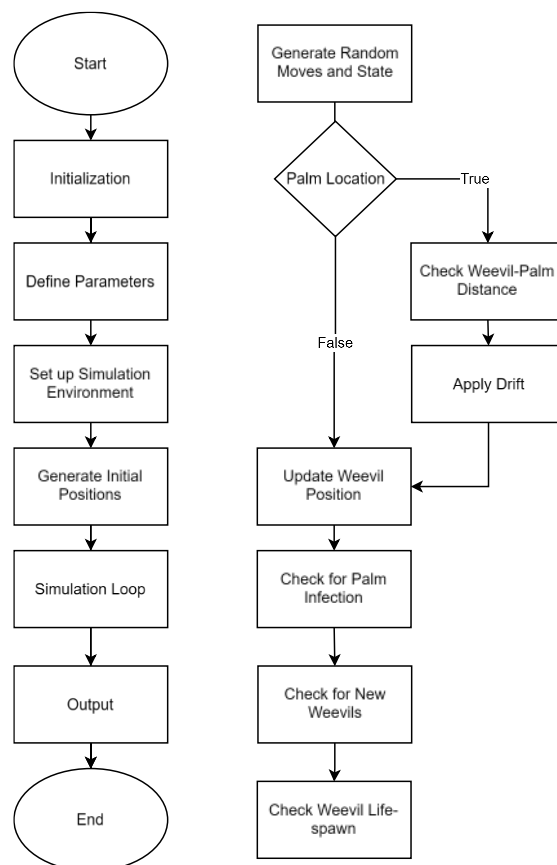


Diagram of the simulation process (b) Diagram of the main simulation loop

Figure 1: Architecture diagram of the simulation model

4. Results

The simulation results offer valuable insights into the dynamics of RPW infestation and dispersal across the modeled landscape. The model successfully replicated the weevils' movement patterns, demonstrating how their random movements, influenced by proximity to palm trees, can lead to localized infestations. The simulation also showed that the presence of multiple infected trees significantly increases the likelihood of rapid spread, particularly when trees are closely spaced, enabling weevils to move easily from one to another. Furthermore, the model highlighted the critical role of palm density and spatial distribution in the overall infestation dynamics. Areas with higher palm density experienced faster spread of the weevil population, while isolated trees had lower infestation rates. Additionally, the results underscored the importance of early detection and intervention, as delayed response time led to higher infection rates and more substantial damage. These findings provide a foundation for developing targeted pest management strategies, focusing on high-risk areas to effectively contain and control the spread of the RPW.

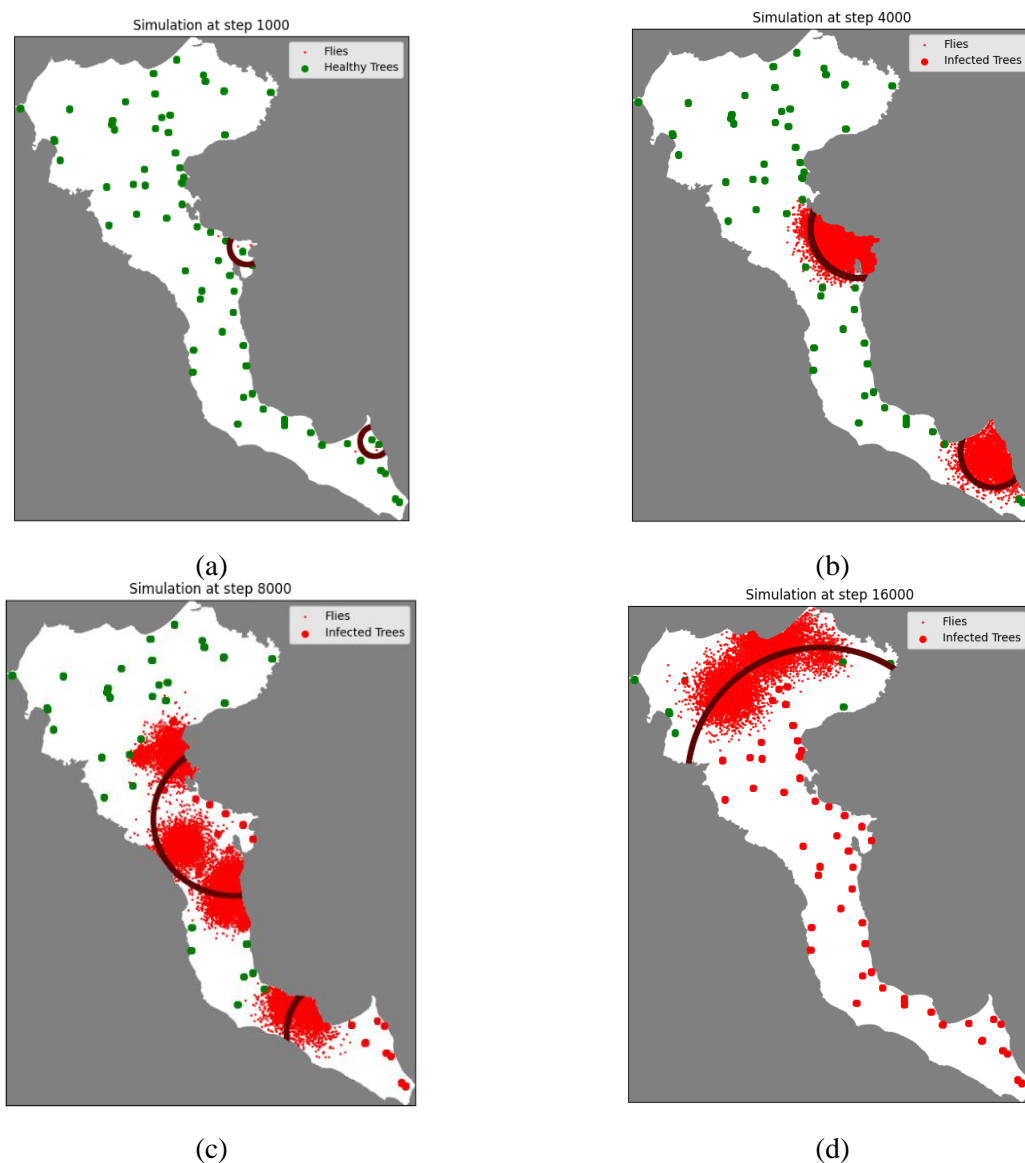


Figure 2: RPW distribution after 1000 steps (a), 4000 steps (b), 8000 steps (c) and 16000 steps (d)

5. Discussion

The simulation aimed to model the dispersion of the RPW across the island of Corfu over a four-year timeframe. The results offer a comprehensive understanding of the infestation dynamics and highlight the critical factors driving the spread of this invasive pest. Throughout the simulated period, the weevil population exhibited significant expansion across the island, primarily influenced by the density and spatial distribution of palm trees. The model effectively demonstrated that the proximity of trees plays a pivotal role in the rate of infestation, with densely populated areas experiencing faster and more extensive spread, while isolated trees were less susceptible to becoming infested.

Although the simulation offers valuable insights, it is crucial to recognize its limitations. The model assumes static environmental conditions and fails to account for potential changes in climate, human activities, or natural predators that could influence the weevil population. Furthermore, the accuracy of the simulation depends on the initial parameters and assumptions made regarding weevil behavior, which may not align with real-world scenarios. Despite these limitations, the simulation provides a robust framework for examining the potential dispersion of the RPW and serves as a foundation for developing focused pest management strategies.

6. Conclusion

The simulation of the RPW's dispersion on the island of Corfu over a four-year period has yielded crucial insights into the factors governing the dynamics of this invasive species. The findings underscore the significance of tree density, spatial distribution, and early intervention in regulating the spread of the weevil population. The model indicates that concentrating control measures on densely populated areas and vigilantly monitoring for early signs of infestation could substantially alleviate the weevil's impact on the palm trees across the island.

7. Acknowledgements

Funded by the European Union for the project REMARKABLE (GA 101086387). Views and opinions expressed are however those of the author(s) only and do not necessarily reflect those of the European Union or the European Research Executive Agency (REA). Neither the European Union nor the granting authority can be held responsible for them.

8. References

- [1] Alzaben, R., Fallatah, S., Quraishi, H., Alhuwaidi, S., & Hussain, A. A. (2022, December). IoT-based RPW Early Detection and Tracking System. In *2022 14th International Conference on Computational Intelligence and Communication Networks (CICN)* (pp. 333-337). IEEE.
- [2] Kontodimas, D. C., Milonas, P. G., Vassiliou, V., Thymakis, N., & Economou, D. (2006). The occurrence of *Rhynchophorus ferrugineus* in Greece and Cyprus and the risk against the native Greek palm tree *Phoenix theophrasti*. *Entomologia Hellenica*, 16, 11-15.
- [3] Dembilio, Ó., & Jaques, J. A. (2012). Bio-ecology and integrated management of the RPW, *Rhynchophorus ferrugineus* (Coleoptera: Curculionidae), in the region of Valencia (Spain). *Hellenic Plant Protection Journal*, (5), 1-12.
- [4] Ávalos, J. A., Martí-Campoy, A., & Soto, A. (2014). Study of the flying ability of *Rhynchophorus ferrugineus* (Coleoptera: Dryophthoridae) adults using a computer-monitored flight mill. *Bulletin of entomological research*, 104(4), 462-470.
- [5] Eldin, H. A., Waleed, K., Samir, M., Tarek, M., Sobeah, H., & Salam, M. A. (2020, November). A survey on detection of RPW inside palm trees: Challenges and applications. In *Proceedings of the 9th International Conference on Software and Information Engineering* (pp. 119-125).
- [6] Murphy, S. T., & Briscoe, B. R. (1999). The RPW as an alien invasive: biology and the prospects for biological control as a component of IPM.

- [7] Hoddle, M. S., Hoddle, C. D., & Milosavljević, I. (2020). How far can *Rhynchophorus palmarum* (Coleoptera: Curculionidae) fly?. *Journal of Economic Entomology*, 113(4), 1786-1795.
- [8] Murphy, S. T., & Briscoe, B. R. (1999). The RPW as an alien invasive: biology and the prospects for biological control as a component of IPM.
- [9] Fiaboe, K. K. M., Peterson, A. T., Kairo, M. T. K., & Roda, A. L. (2012). Predicting the potential worldwide distribution of the RPW *Rhynchophorus ferrugineus* (Olivier)(Coleoptera: Curculionidae) using ecological niche modeling. *Florida Entomologist*, 659-673.
- [10] Hoddle, M. S., Antony, B., El-Shafie, H. A., Chamorro, M. L., Milosavljević, I., Löhr, B., & Faleiro, J. R. (2024). Taxonomy, biology, symbionts, omics, and management of rhynchophorus palm weevils (Coleoptera: Curculionidae: Dryophthorinae). *Annual Review of Entomology*, 69(1), 455-479.
- [11] Barkan, S., Hoffman, A., Hezroni, A., & Soroker, V. (2018). Flight performance and dispersal potential of RPW estimated by repeated flights on flight mill. *Journal of insect Behavior*, 31, 66-82.
- [12] Abbas, M. S. T., Hanounik, S. B., Shahdad, A. S., & Ai-Bagham, S. A. (2006). Aggregation pheromone traps, a major component of IPM strategy for the RPW, *Rhynchophorus ferrugineus* in date palms (Coleoptera: Curculionidae). *Journal of Pest Science*, 79(2), 69-73.
- [13] Mendel, Z., Voet, H., Nazarian, I., Dobrinin, S., & Ment, D. (2024). Comprehensive Analysis of Management Strategies for RPW in Date Palm Settings, Emphasizing Sensor-Based Infestation Detection. *Agriculture*, 14(2), 260.
- [14] Fiaboe, K. K. M., Peterson, A. T., Kairo, M. T. K., & Roda, A. L. (2012). Predicting the potential worldwide distribution of the RPW *Rhynchophorus ferrugineus* (Olivier)(Coleoptera: Curculionidae) using ecological niche modeling. *Florida Entomologist*, 659-673.
- [15] Goldshtein, E., Cohen, Y., Hetzroni, A., Cohen, Y., & Soroker, V. (2020). The spatiotemporal dynamics and range expansion of the RPW in Israel. *Journal of Pest Science*, 93(2), 691-702.